



[Type text]

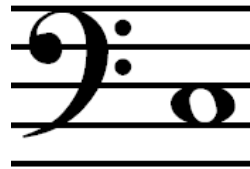
 *Bass Clef Note Names Test* 
Underneath each note, write its letter name.



.....



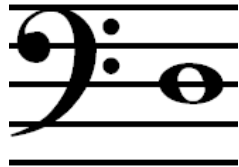
.....



.....



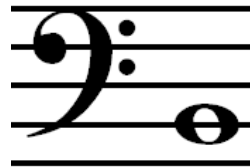
.....



.....



.....

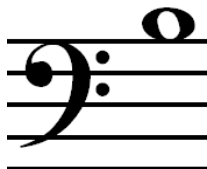


.....

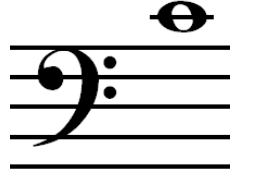


.....

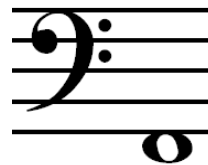
Bonus Extra Credit:



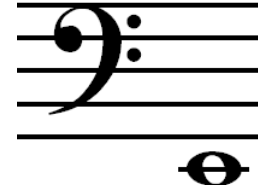
.....



.....



.....



.....

[Type text]



Write a **whole note** on the appropriate line or space.
If you can find a letter name in more than one place, either place is acceptable.



A

F

C

B

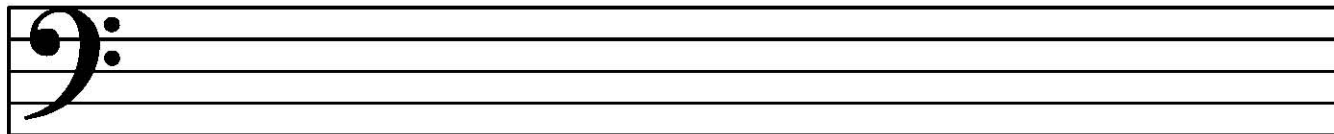


D

G

E

C



F

B

A

D

[Type text]